



NATA LIGHTING CO.,LTD.  
www.nata.cn  
Email:info@nata.com  
Tel:+86-750-3770000 Fax:+86-750-3771111  
Address:380JinOu Road,GaoXin Zone,Jiang Men City,Guangdong,China

NT

Client:

LumCAT: 2-2681-L

Luminaire: 92.70.429.00

Report No: 2024410-B018

Ballast type: AC

Test No: 2024410-C018

Voltage(V): 34.800

LampCAT: CREE CXA1830 LES14

Current(A): 0.530

Lamp flux(lm): 2713.0

Power (W): 18.444

Number of Lamps: 1

PF: 0.000

Length(mm): 0

Width(mm): 0

Phm Type: C

Height(mm): 0

### Photometric Results

Lumens(lm): 2267.75, Efficiency(%): 83.59% , Luminous Efficacy(lm/W): 122.95

Central intensity(cd): 4056.838, Maximum intensity(cd): 4056.838

Angle of maximum intensity: C=0.0  $\gamma$ =0.0

Beam Angle(50%Imax): [C0/180]Total=44.6

[C90/270]Total=44.6

Field angle(10%Imax): [C0/180]Total=68.2

[C90/270]Total=68.2

Maximum s/h(1/2): C0\_180=0.71 C90\_270=0.71

Maximum s/h(1/4): C0\_180=0.69 C90\_270=0.69

Up flux rate of lamp(%): 0.00%

Down flux rate of lamp(%): 83.59%

Up flux rate of LUM(%): - -

Down flux rate of LUM(%): 100.00%

CIE Type : Direct lighting

Output flux ratio in  $\pi$  solid angle : 97.822%

Equipment: GMS1980  
Temperature(°C): 25.0

Date: 2024/4/10  
Humidity(%): 60.0%

Operator: NT07  
Distance(m): 7.65

$\gamma(^{\circ})$	Average I(cd)	Zonal F(lm)	Sum F(lm)	Eff Flux(%)	Eff Sum(%)
0.0	4056.838	0.000	0	0.00%	0.00%
1.0	4050.328	3.879	3.879	0.14%	0.17%
2.0	4039.062	11.611	15.49	0.43%	0.68%
3.0	4017.774	19.269	34.759	0.71%	1.53%
4.0	3984.490	26.786	61.545	0.99%	2.71%
5.0	3941.915	34.099	95.644	1.26%	4.22%
6.0	3885.148	41.133	136.778	1.52%	6.03%
7.0	3823.553	47.848	184.625	1.76%	8.14%
8.0	3749.083	54.196	238.821	2.00%	10.53%
9.0	3670.004	60.128	298.949	2.22%	13.18%
10.0	3587.780	65.680	364.629	2.42%	16.08%
11.0	3490.560	70.727	435.356	2.61%	19.20%
12.0	3389.901	75.213	510.57	2.77%	22.51%
13.0	3280.976	79.167	589.736	2.92%	26.01%
14.0	3169.198	82.562	672.298	3.04%	29.65%
15.0	3053.470	85.428	757.725	3.15%	33.41%
16.0	2932.109	87.705	845.431	3.23%	37.28%
17.0	2799.043	89.249	934.68	3.29%	41.22%
18.0	2661.516	90.033	1024.713	3.32%	45.19%
19.0	2525.670	90.246	1114.959	3.33%	49.17%
20.0	2374.536	89.687	1204.647	3.31%	53.12%
21.0	2222.816	88.278	1292.925	3.25%	57.01%
22.0	2069.999	86.266	1379.191	3.18%	60.82%
23.0	1920.109	83.723	1462.915	3.09%	64.51%
24.0	1772.047	80.724	1543.638	2.98%	68.07%
25.0	1612.134	76.949	1620.587	2.84%	71.46%
26.0	1385.484	70.759	1691.346	2.61%	74.58%
27.0	1271.489	65.003	1756.35	2.40%	77.45%
28.0	1165.922	61.710	1818.06	2.27%	80.17%
29.0	1019.169	57.168	1875.228	2.11%	82.69%
30.0	871.524	51.048	1926.276	1.88%	84.94%
31.0	738.708	44.810	1971.087	1.65%	86.92%
32.0	619.058	38.898	2009.985	1.43%	88.63%
33.0	503.689	33.077	2043.062	1.22%	90.09%
34.0	412.269	27.720	2070.781	1.02%	91.31%
35.0	326.124	22.932	2093.713	0.85%	92.33%
36.0	265.495	18.837	2112.55	0.69%	93.16%
37.0	236.563	16.374	2128.925	0.60%	93.88%

$\gamma(^{\circ})$	Average I(cd)	Zonal F(lm)	Sum F(lm)	Eff Flux(%)	Eff Sum(%)
38.0	157.777	13.163	2142.087	0.49%	94.46%
39.0	112.239	9.216	2151.303	0.34%	94.87%
40.0	85.472	6.895	2158.199	0.25%	95.17%
41.0	69.664	5.524	2163.723	0.20%	95.41%
42.0	57.959	4.637	2168.36	0.17%	95.62%
43.0	50.637	4.023	2172.383	0.15%	95.79%
44.0	45.187	3.617	2175.999	0.13%	95.95%
45.0	41.390	3.327	2179.327	0.12%	96.10%
46.0	38.800	3.136	2182.463	0.12%	96.24%
47.0	36.423	2.992	2185.454	0.11%	96.37%
48.0	34.762	2.878	2188.332	0.11%	96.50%
49.0	33.285	2.794	2191.126	0.10%	96.62%
50.0	31.961	2.720	2193.847	0.10%	96.74%
51.0	30.841	2.657	2196.504	0.10%	96.86%
52.0	29.810	2.603	2199.106	0.10%	96.97%
53.0	28.932	2.555	2201.662	0.09%	97.09%
54.0	28.047	2.511	2204.173	0.09%	97.20%
55.0	27.271	2.469	2206.642	0.09%	97.31%
56.0	26.423	2.426	2209.069	0.09%	97.41%
57.0	25.691	2.383	2211.452	0.09%	97.52%
58.0	24.967	2.343	2213.794	0.09%	97.62%
59.0	24.250	2.301	2216.095	0.08%	97.72%
60.0	23.585	2.260	2218.355	0.08%	97.82%
61.0	22.926	2.220	2220.575	0.08%	97.92%
62.0	22.297	2.179	2222.754	0.08%	98.02%
63.0	21.675	2.139	2224.892	0.08%	98.11%
64.0	21.061	2.097	2226.989	0.08%	98.20%
65.0	20.454	2.055	2229.044	0.08%	98.29%
66.0	19.876	2.012	2231.056	0.07%	98.38%
67.0	19.320	1.971	2233.027	0.07%	98.47%
68.0	18.742	1.928	2234.955	0.07%	98.55%
69.0	18.215	1.885	2236.84	0.07%	98.64%
70.0	17.710	1.845	2238.685	0.07%	98.72%
71.0	17.235	1.806	2240.492	0.07%	98.80%
72.0	16.774	1.768	2242.26	0.07%	98.88%
73.0	16.335	1.731	2243.991	0.06%	98.95%
74.0	16.006	1.700	2245.692	0.06%	99.03%
75.0	15.772	1.679	2247.371	0.06%	99.10%

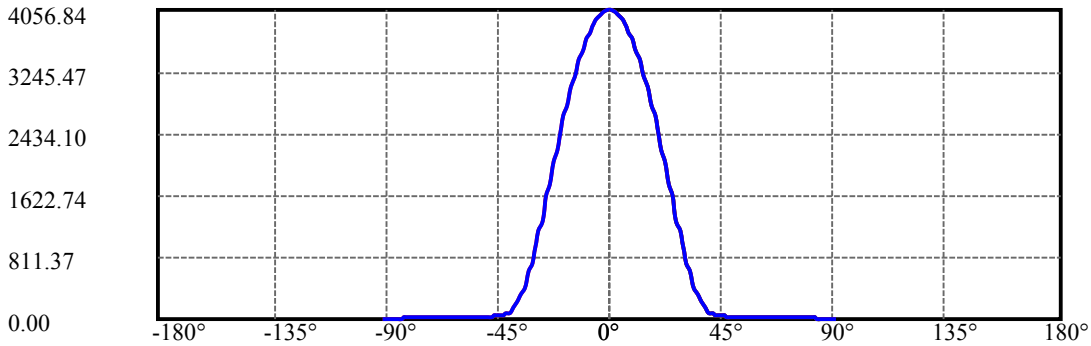
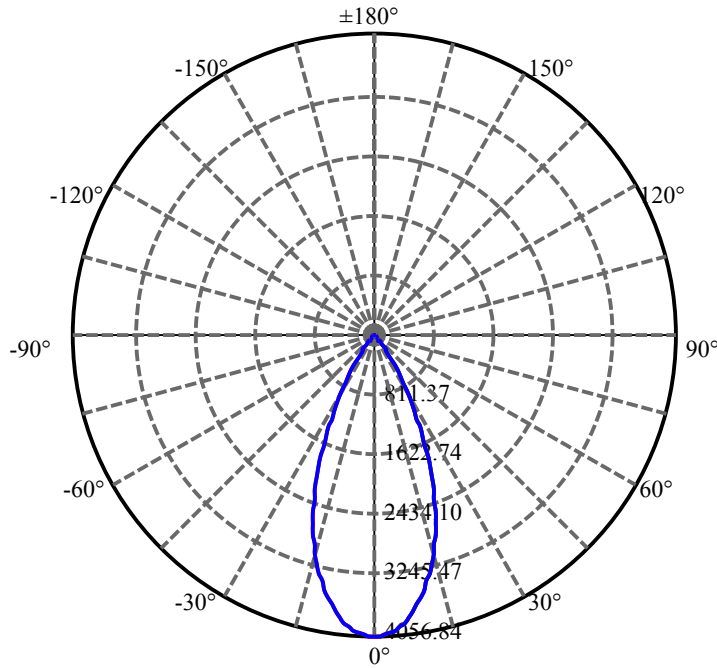
$\gamma(^{\circ})$	Average I(cd)	Zonal F(lm)	Sum F(lm)	Eff Flux(%)	Eff Sum(%)
76.0	15.618	1.666	2249.037	0.06%	99.17%
77.0	15.318	1.649	2250.686	0.06%	99.25%
78.0	15.055	1.626	2252.312	0.06%	99.32%
79.0	14.506	1.588	2253.9	0.06%	99.39%
80.0	14.002	1.537	2255.437	0.06%	99.46%
81.0	13.482	1.486	2256.924	0.05%	99.52%
82.0	12.904	1.431	2258.355	0.05%	99.59%
83.0	12.282	1.369	2259.724	0.05%	99.65%
84.0	11.544	1.298	2261.022	0.05%	99.70%
85.0	10.849	1.222	2262.244	0.05%	99.76%
86.0	10.358	1.159	2263.403	0.04%	99.81%
87.0	10.066	1.118	2264.521	0.04%	99.86%
88.0	9.861	1.092	2265.612	0.04%	99.91%
89.0	9.722	1.073	2266.686	0.04%	99.95%
90.0	9.671	1.063	2267.749	0.04%	100.00%

ZONAL LUMEN SUMMARY

Zone	Lumens	%Lamp	%Fixt
0-30	1926.28	71.00%	84.94%
0-40	2158.20	79.55%	95.17%
0-60	2218.35	81.77%	97.82%
0-90	2266.69	83.55%	99.95%
0-120	2266.69	83.55%	99.95%
0-180	2267.75	83.59%	100.00%
60-90	48.33	1.78%	2.13%
90-120	0.00	0.00%	0.00%
90-130	0.00	0.00%	0.00%
90-150	0.00	0.00%	0.00%
90-180	0.00	0.00%	0.00%
0-27.94	1814.20	66.87%	80.00%

ZONAL LUMEN SUMMARY

0-10	364.63
10-20	840.02
20-30	721.63
30-40	231.92
40-50	35.65
50-60	24.51
60-70	20.33
70-80	16.75
80-90	11.25
90-100	0.00
100-110	0.00
110-120	0.00
120-130	0.00
130-140	0.00
140-150	0.00
150-160	0.00
160-170	0.00
170-180	0.00



C0(Max): —————

C0/C180: —————

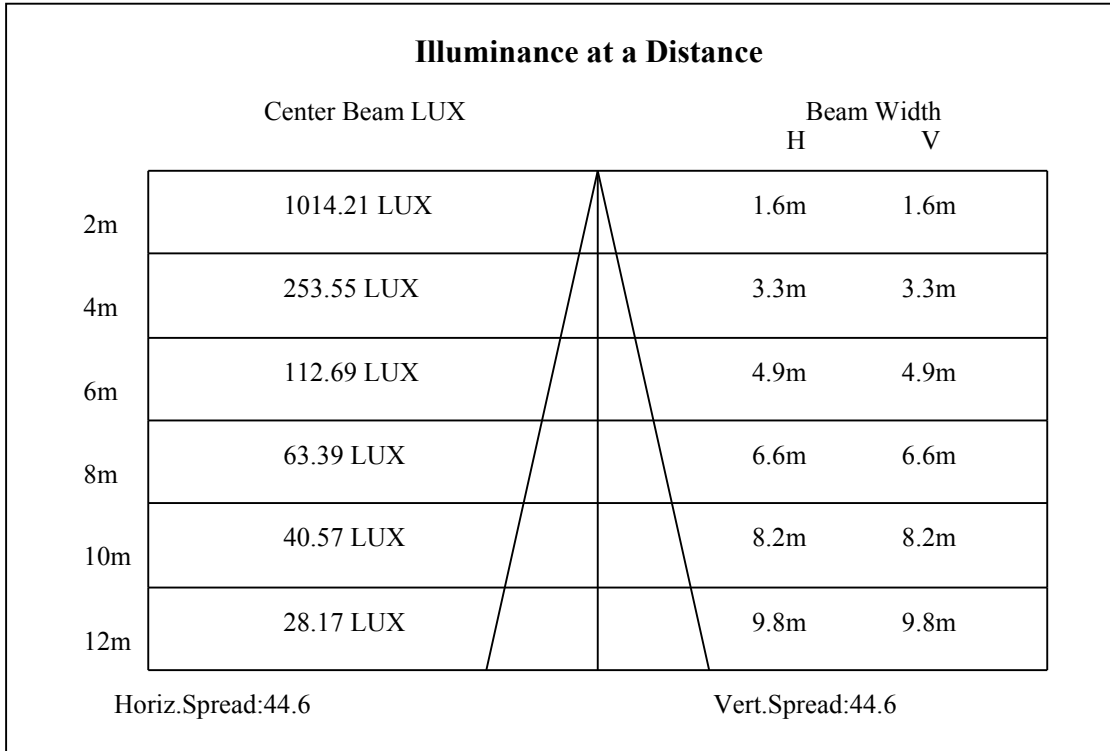
C90/C270: —————

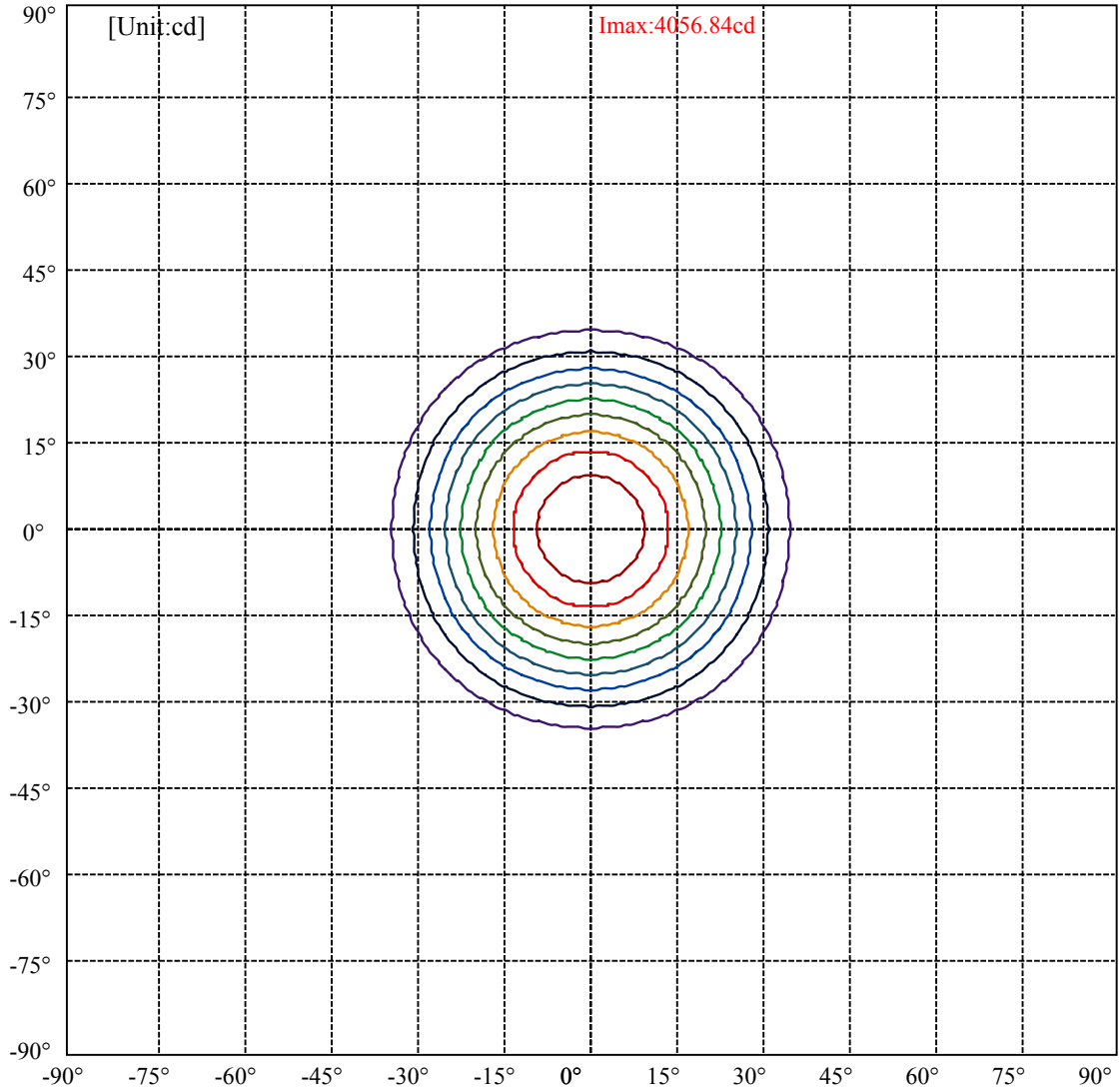
Field angle(10%Imax):C0/180Left:34.1 Right:34.1

:C90/270Left:34.1 Right:34.1

Beam Angle(50%Imax):C0/180Left:22.3 Right:22.3

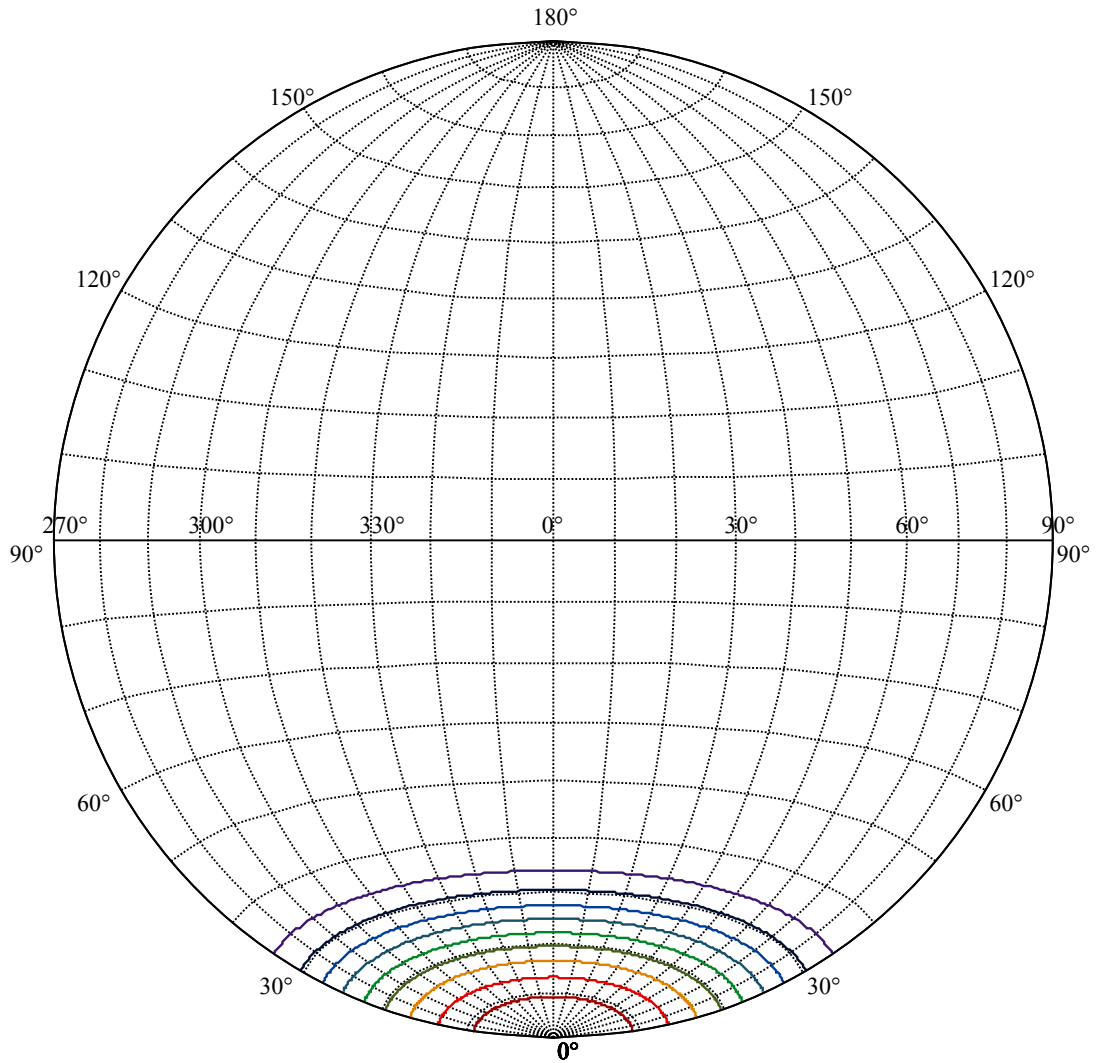
:C90/270Left:22.3 Right:22.3





(10%Imax) 405.684	—
(20%Imax) 811.368	—
(30%Imax) 1217.05	—
(40%Imax) 1622.74	—
(50%Imax) 2028.42	—
(60%Imax) 2434.1	—
(70%Imax) 2839.79	—
(80%Imax) 3245.47	—
(90%Imax) 3651.15	—





House

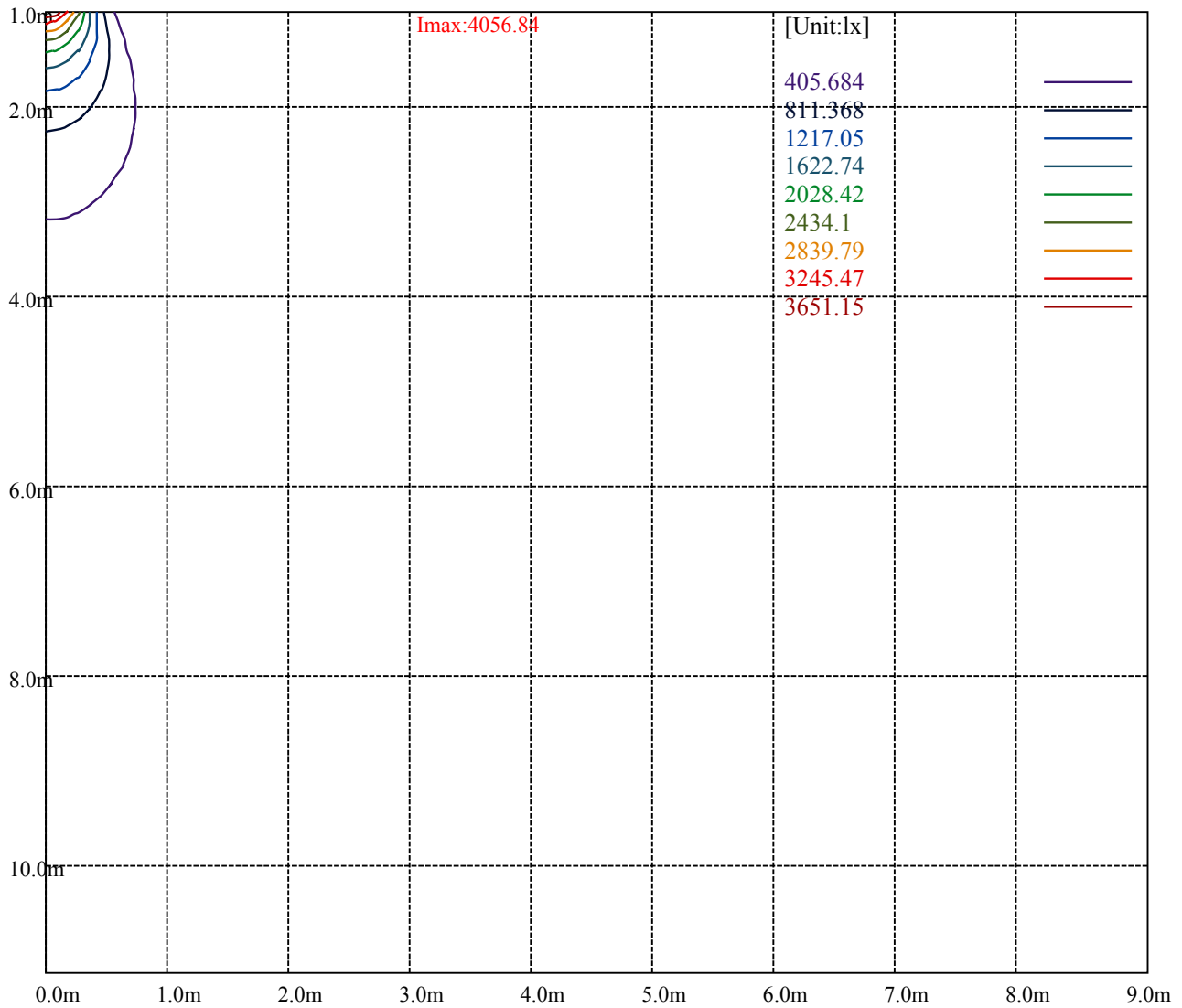
[Unit:cd]

Road

Imax:4056.84

(10%Imax)	405.684	—
(20%Imax)	811.368	—
(30%Imax)	1217.05	—
(40%Imax)	1622.74	—
(50%Imax)	2028.42	—
(60%Imax)	2434.1	—
(70%Imax)	2839.79	—
(80%Imax)	3245.47	—
(90%Imax)	3651.15	—





Luminance Table

$\gamma$	45	50	55	60	65	70	75	80	85
C0	0	0	0	0	0	0	0	0	0
C45	0	0	0	0	0	0	0	0	0
C90	0	0	0	0	0	0	0	0	0

L(Hor)(65)	L(Ver)(65)	L45(65)	L(Hor)(75)	L(Ver)(75)	L45(75)	L(Hor)(85)	L(Ver)(85)	L45(85)
0	0	0	0	0	0	0	0	0

Glare Table

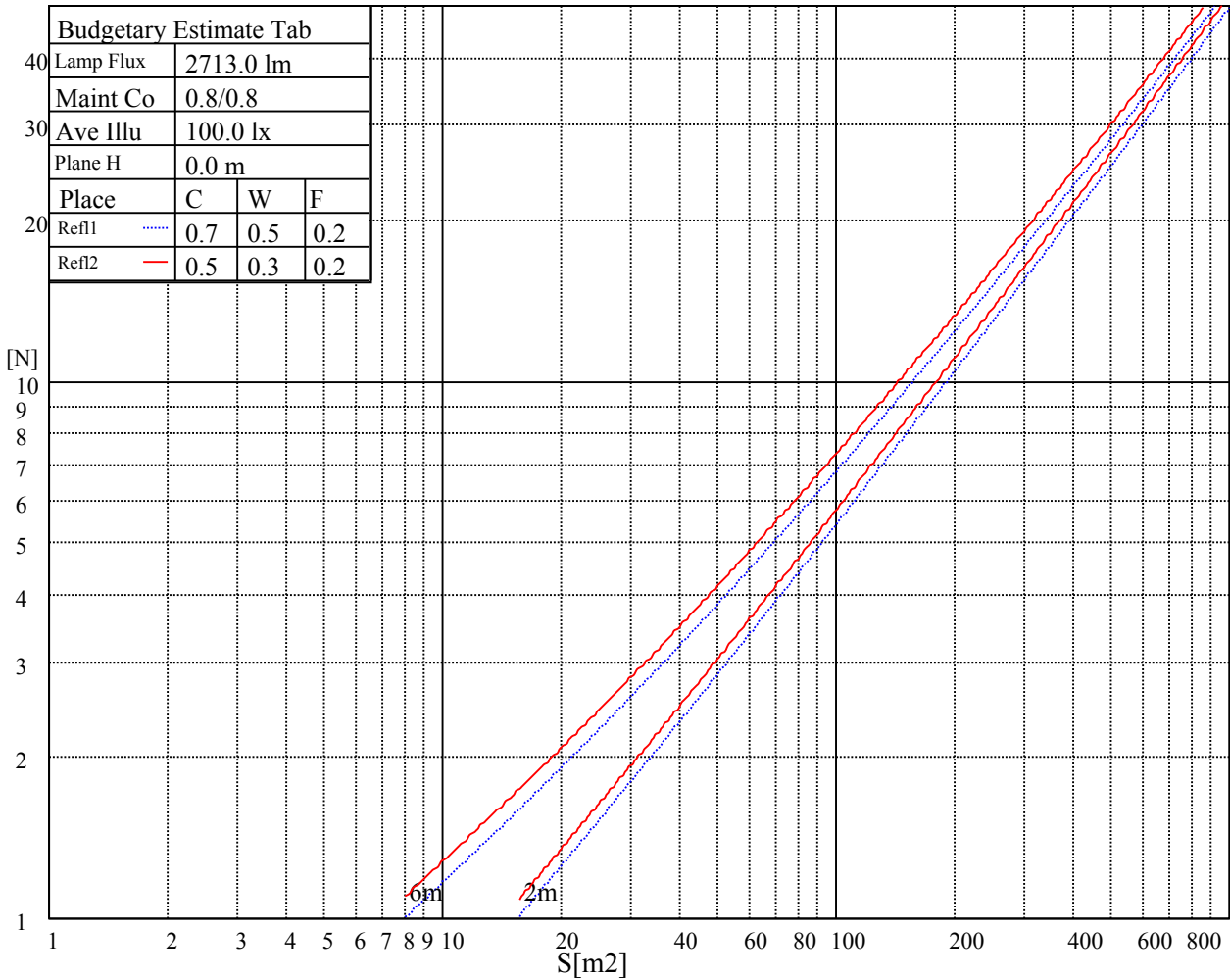
Glare	Quality	Service Values Illuminance(lx)							
1.15	A	2000	1000	500	<=300				
1.5	B		2000	1000	500	<=300			
1.85	C			2000	1000	500	<=300		
2.2	D				2000	1000	500	<=300	
2.55	E					2000	1000	500	<=300
		a	b	c	d	e	f	g	h

Luminance Limiting Curve

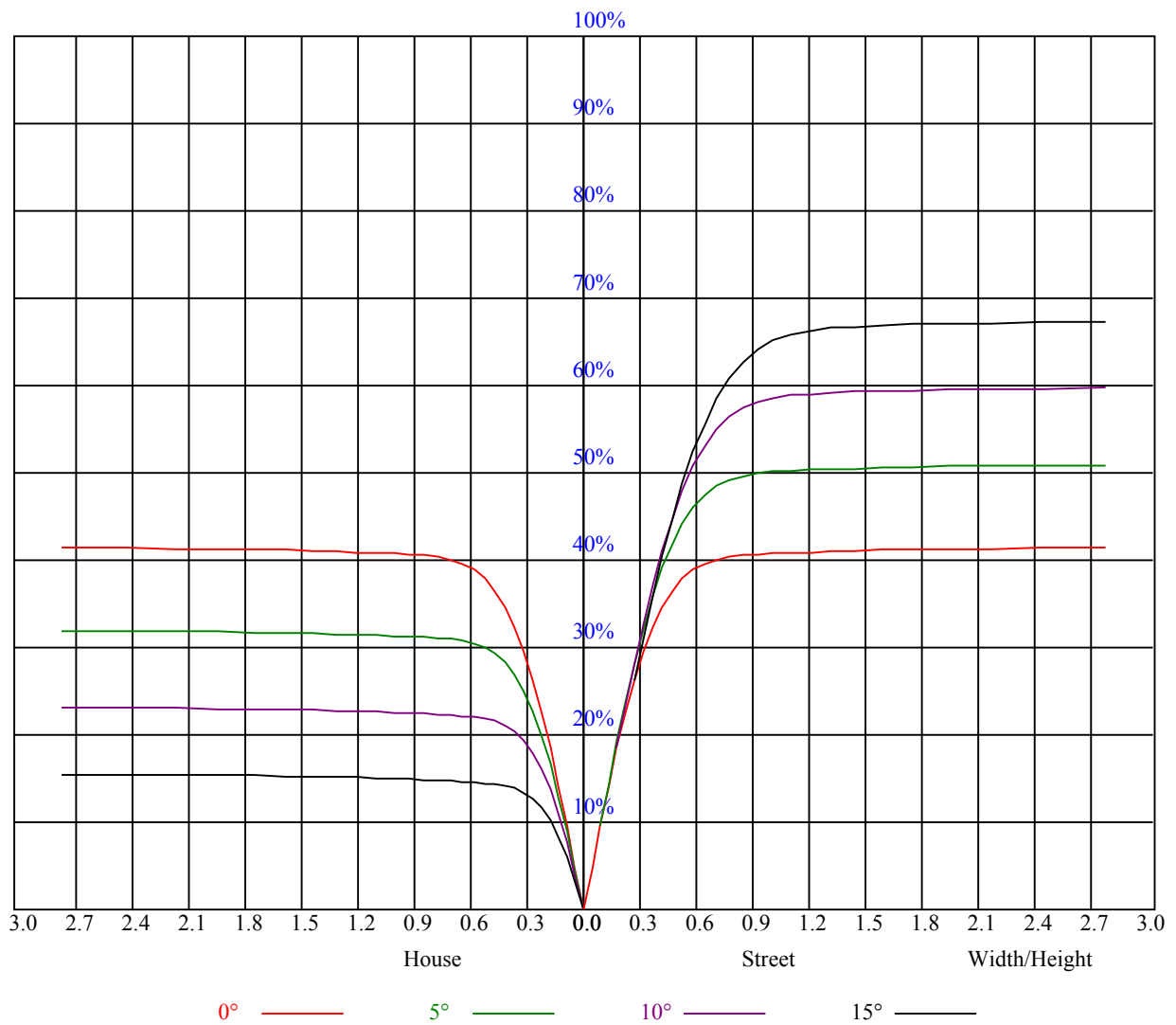


Illumination assessment according UGR										
Rf of Ceiling	70	70	50	50	30	70	70	50	50	30
Rf of Wall	50	30	50	30	30	50	30	50	30	30
Rf of Floor	20	20	20	20	20	20	20	20	20	20
Room dimensions	Viewed crosswise					Viewed endwise				
X	Y									
2H	2H	非数字	非数字	非数字	非数字	非数字	非数字	非数字	非数字	非数字
	3H	非数字	非数字	非数字	非数字	非数字	非数字	非数字	非数字	非数字
	4H	非数字	非数字	非数字	非数字	非数字	非数字	非数字	非数字	非数字
	6H	非数字	非数字	非数字	非数字	非数字	非数字	非数字	非数字	非数字
	8H	非数字	非数字	非数字	非数字	非数字	非数字	非数字	非数字	非数字
	12H	非数字	非数字	非数字	非数字	非数字	非数字	非数字	非数字	非数字
4H	2H	非数字	非数字	非数字	非数字	非数字	非数字	非数字	非数字	非数字
	3H	非数字	非数字	非数字	非数字	非数字	非数字	非数字	非数字	非数字
	4H	非数字	非数字	非数字	非数字	非数字	非数字	非数字	非数字	非数字
	6H	非数字	非数字	非数字	非数字	非数字	非数字	非数字	非数字	非数字
	8H	非数字	非数字	非数字	非数字	非数字	非数字	非数字	非数字	非数字
	12H	非数字	非数字	非数字	非数字	非数字	非数字	非数字	非数字	非数字
8H	4H	非数字	非数字	非数字	非数字	非数字	非数字	非数字	非数字	非数字
	6H	非数字	非数字	非数字	非数字	非数字	非数字	非数字	非数字	非数字
	8H	非数字	非数字	非数字	非数字	非数字	非数字	非数字	非数字	非数字
	12H	非数字	非数字	非数字	非数字	非数字	非数字	非数字	非数字	非数字
12H	4H	非数字	非数字	非数字	非数字	非数字	非数字	非数字	非数字	非数字
	6H	非数字	非数字	非数字	非数字	非数字	非数字	非数字	非数字	非数字
	8H	非数字	非数字	非数字	非数字	非数字	非数字	非数字	非数字	非数字
Variation with the observer position at spacings:										
S = 1.0H	非数字/非数字					非数字/非数字				
S = 1.5H	非数字/非数字					非数字/非数字				
S = 2.0H	非数字/非数字					非数字/非数字				
Standard tables:	BK0					BK0				
Uncorrected UGR	负无穷大					负无穷大				

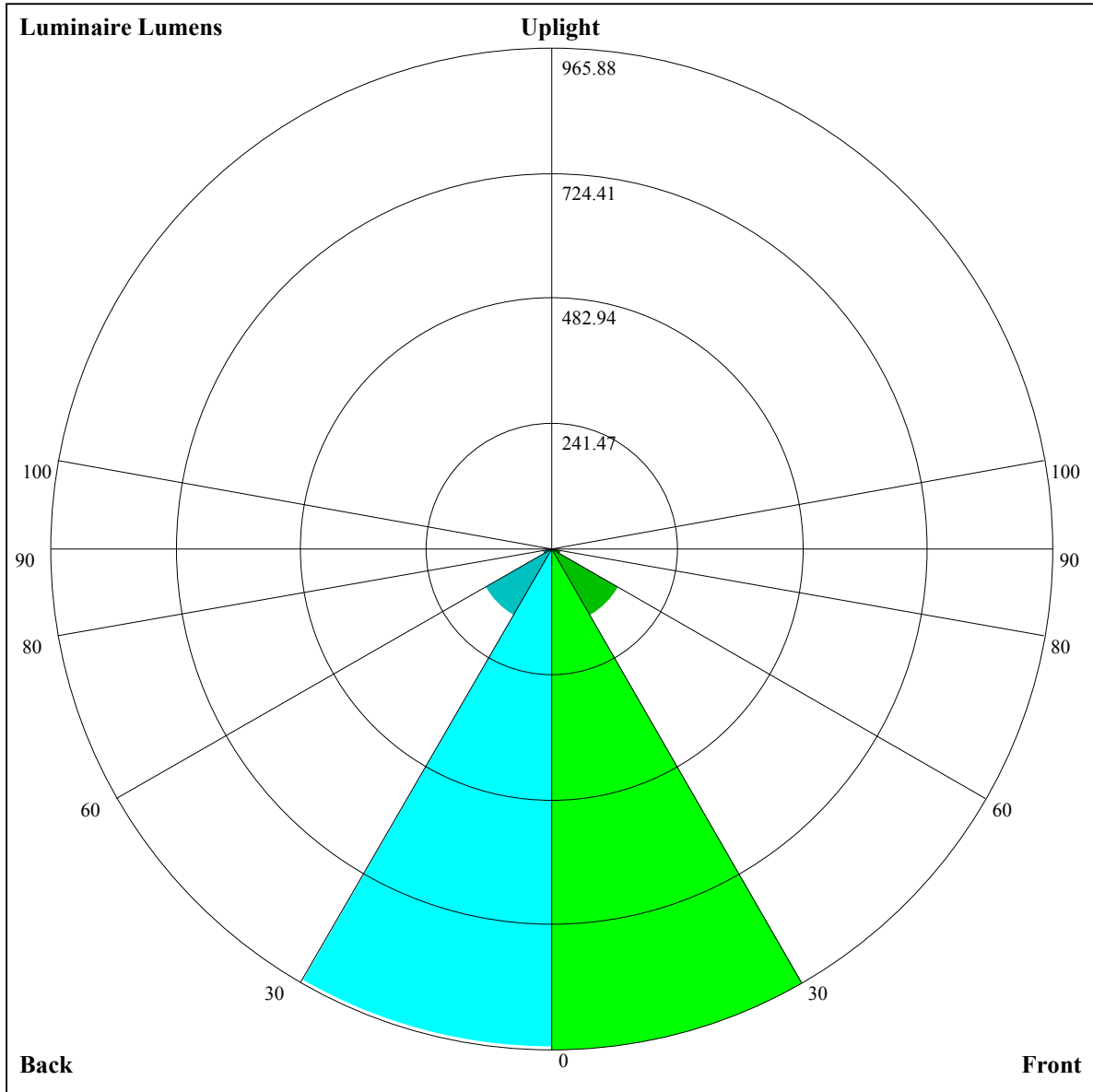
UGR calculation is based on CIE Publ. 117 ,S/H = 0.25



RHOCC	80			70			50			30			10			0
RHOW	50	30	10	50	30	10	50	30	10	50	30	10	50	30	10	0
RCR	COEFFICIENTS OF UTILIZATION RHOF=20 CU															
0	1.00	1.00	1.00	0.97	0.97	0.97	0.93	0.93	0.93	0.89	0.89	0.89	0.85	0.85	0.85	0.84
1	0.93	0.91	0.89	0.91	0.89	0.88	0.88	0.86	0.85	0.85	0.83	0.82	0.82	0.81	0.80	0.79
2	0.87	0.84	0.81	0.86	0.83	0.80	0.83	0.81	0.79	0.80	0.79	0.77	0.78	0.77	0.75	0.74
3	0.82	0.78	0.75	0.81	0.77	0.74	0.79	0.76	0.73	0.77	0.74	0.72	0.75	0.73	0.71	0.70
4	0.77	0.73	0.70	0.76	0.73	0.70	0.75	0.71	0.69	0.73	0.70	0.68	0.72	0.69	0.67	0.66
5	0.73	0.69	0.66	0.73	0.68	0.65	0.71	0.68	0.65	0.70	0.67	0.64	0.68	0.66	0.64	0.63
6	0.70	0.65	0.62	0.69	0.65	0.62	0.68	0.64	0.61	0.67	0.63	0.61	0.66	0.63	0.60	0.59
7	0.66	0.62	0.59	0.66	0.61	0.58	0.65	0.61	0.58	0.64	0.60	0.58	0.63	0.60	0.58	0.56
8	0.63	0.59	0.56	0.63	0.58	0.55	0.62	0.58	0.55	0.61	0.58	0.55	0.60	0.57	0.55	0.54
9	0.60	0.56	0.53	0.60	0.56	0.53	0.59	0.55	0.53	0.58	0.55	0.52	0.58	0.55	0.52	0.51
10	0.58	0.53	0.50	0.57	0.53	0.50	0.57	0.53	0.50	0.56	0.53	0.50	0.55	0.52	0.50	0.49







Luminaire Lumens:

FL=965.88,FM=147.13,FH=18.84,FVH=6.24

BL=959.96,BM=147.97,BH=18.35,BVH=6.09

UL=0,UH=0

BUG Rating:B2-U0-G0

Intensity data(cd)

C/γ(°)	0.0	1.0	2.0	3.0	4.0	5.0	6.0	7.0	8.0
0.0	4058.59	4052.16	4042.21	4019.38	3987.78	3937.45	3884.78	3827.43	3741.40
45.0	4053.33	4052.16	4058.01	4041.62	4022.31	3995.39	3953.25	3887.71	3833.87
90.0	4057.42	4051.57	4043.38	4021.14	3980.76	3936.87	3890.63	3813.38	3743.16
135.0	4058.01	4059.18	4055.08	4039.28	4011.19	3970.22	3915.80	3860.79	3781.20
180.0	4058.59	4055.08	4045.13	4026.99	3989.54	3947.40	3886.54	3830.36	3756.03
225.0	4053.33	4038.11	4007.68	3971.98	3935.11	3879.52	3805.19	3744.91	3662.98
270.0	4057.42	4051.57	4039.28	4027.58	3988.95	3951.50	3900.58	3844.99	3764.23
315.0	4058.01	4042.79	4021.72	3994.22	3960.28	3916.97	3844.40	3778.86	3709.80
360.0	4058.59	4052.16	4042.21	4019.38	3987.78	3937.45	3884.78	3827.43	3741.40
C/γ(°)	9.0	10.0	11.0	12.0	13.0	14.0	15.0	16.0	17.0
0.0	3668.25	3586.32	3469.27	3377.98	3276.73	3146.81	3035.04	2923.84	2800.95
45.0	3766.57	3698.68	3592.17	3503.80	3418.94	3316.53	3183.68	3073.66	2956.03
90.0	3653.03	3572.86	3482.15	3388.51	3260.35	3153.84	3035.62	2921.50	2771.10
135.0	3709.21	3633.72	3556.47	3446.45	3351.06	3252.74	3142.72	3002.85	2884.63
180.0	3672.93	3590.41	3498.53	3383.24	3285.51	3182.51	3067.22	2954.27	2802.70
225.0	3585.15	3478.64	3383.24	3288.44	3153.25	3043.81	2934.96	2783.39	2654.05
270.0	3693.41	3616.16	3506.73	3413.68	3291.36	3184.27	3071.90	2955.44	2806.21
315.0	3611.48	3525.45	3435.91	3317.11	3210.60	3073.07	2956.62	2841.91	2716.67
360.0	3668.25	3586.32	3469.27	3377.98	3276.73	3146.81	3035.04	2923.84	2800.95
C/γ(°)	18.0	19.0	20.0	21.0	22.0	23.0	24.0	25.0	26.0
0.0	2647.03	2518.87	2378.41	2204.60	2062.98	1923.69	1777.39	1601.82	1461.95
45.0	2807.97	2682.14	2511.84	2373.15	2230.35	2092.82	1911.40	1772.71	1632.25
90.0	2645.28	2515.94	2379.58	2201.67	2056.54	1875.70	1738.18	1597.14	1463.95
135.0	2765.83	2638.84	2472.05	2339.79	2168.32	2021.43	1879.80	1708.33	1570.22
180.0	2673.95	2545.20	2374.32	2237.96	2054.20	1907.89	1765.68	1595.97	1468.97
225.0	2517.11	2342.71	2199.92	2061.22	1924.86	1751.05	1611.18	1480.09	1334.58
270.0	2680.39	2542.28	2407.09	2234.45	2101.02	1961.73	1811.33	1638.10	1497.65
315.0	2554.57	2419.38	2273.07	2129.69	1961.73	1826.55	1681.41	1502.92	1354.30
360.0	2647.03	2518.87	2378.41	2204.60	2062.98	1923.69	1777.39	1601.82	1461.95
C/γ(°)	27.0	28.0	29.0	30.0	31.0	32.0	33.0	34.0	35.0
0.0	1138.15	1138.15	1000.09	864.67	707.36	591.84	489.60	398.60	302.50
45.0	1493.55	1310.96	1171.68	1031.81	897.79	740.37	625.08	525.59	412.06
90.0	1163.95	1127.79	994.12	827.51	707.19	594.24	492.47	382.74	307.07
135.0	1426.25	1282.87	1107.30	970.36	843.37	721.64	584.70	486.97	401.52
180.0	1336.13	1192.75	1016.59	879.07	752.66	637.37	509.79	422.01	345.34
225.0	1134.58	1032.45	898.38	738.96	623.91	518.74	407.90	333.93	251.71
270.0	1325.01	1191.58	1049.37	877.90	746.81	627.42	493.99	403.28	328.37
315.0	1154.30	1050.83	915.82	781.92	630.58	520.85	425.99	345.05	260.43
360.0	1138.15	1138.15	1000.09	864.67	707.36	591.84	489.60	398.60	302.50
C/γ(°)	36.0	37.0	38.0	39.0	40.0	41.0	42.0	43.0	44.0
0.0	237.43	182.18	129.33	99.55	79.65	65.72	54.60	48.57	43.42
45.0	331.88	312.57	228.71	137.24	98.90	79.71	65.90	56.36	48.69
90.0	241.99	177.85	137.88	108.27	82.98	68.82	58.64	49.98	45.35
135.0	306.72	306.72	226.54	138.41	101.19	81.87	65.08	55.77	49.28
180.0	310.81	310.81	155.08	120.73	89.89	72.98	58.70	51.03	45.71
225.0	195.58	150.29	115.11	89.66	68.76	58.00	50.56	45.53	41.08
270.0	295.60	295.60	150.11	116.81	92.06	71.10	59.93	52.38	45.94
315.0	203.95	156.49	119.44	87.26	70.34	59.11	50.27	45.47	42.02
360.0	237.43	182.18	129.33	99.55	79.65	65.72	54.60	48.57	43.42

Intensity data(cd)

C/γ(°)	45.0	46.0	47.0	48.0	49.0	50.0	51.0	52.0	53.0
0.0	40.44	38.10	35.64	34.12	32.83	31.66	30.43	29.50	28.79
45.0	44.48	41.32	38.86	36.87	34.88	33.47	32.30	31.08	30.20
90.0	41.90	39.33	36.69	35.11	33.71	32.48	31.08	30.14	29.32
135.0	43.72	40.56	38.10	36.17	34.59	32.89	31.72	30.72	29.55
180.0	41.02	38.33	36.23	34.53	33.07	31.60	30.49	29.50	28.50
225.0	38.45	36.40	34.35	32.89	31.49	30.43	29.55	28.50	27.74
270.0	42.37	39.68	36.93	35.23	33.77	32.25	31.19	30.14	29.26
315.0	38.74	36.69	34.59	33.18	31.95	30.90	29.96	28.91	28.09
360.0	40.44	38.10	35.64	34.12	32.83	31.66	30.43	29.50	28.79
C/γ(°)	54.0	55.0	56.0	57.0	58.0	59.0	60.0	61.0	62.0
0.0	27.97	27.10	26.39	25.75	25.11	24.35	23.70	23.00	22.41
45.0	29.20	28.44	27.74	26.92	26.16	25.57	24.87	24.11	23.53
90.0	28.27	27.62	26.69	25.93	25.34	24.52	23.88	23.23	22.65
135.0	28.73	27.92	26.86	26.16	25.22	24.58	23.94	23.35	22.59
180.0	27.51	26.69	25.75	24.99	24.29	23.47	22.82	22.18	21.54
225.0	27.04	26.22	25.46	24.64	23.94	23.29	22.59	22.00	21.42
270.0	28.27	27.51	26.74	25.98	25.16	24.46	23.70	23.06	22.41
315.0	27.39	26.69	25.75	25.16	24.52	23.76	23.17	22.47	21.83
360.0	27.97	27.10	26.39	25.75	25.11	24.35	23.70	23.00	22.41
C/γ(°)	63.0	64.0	65.0	66.0	67.0	68.0	69.0	70.0	71.0
0.0	21.89	21.19	20.66	20.07	19.61	18.90	18.38	17.91	17.38
45.0	22.94	22.41	21.71	21.13	20.54	19.90	19.37	18.73	18.20
90.0	22.00	21.42	20.83	20.31	19.72	19.14	18.61	18.02	17.56
135.0	22.00	21.42	20.83	20.13	19.55	19.02	18.43	17.97	17.56
180.0	20.95	20.31	19.72	19.20	18.55	18.02	17.56	16.97	16.50
225.0	20.66	20.07	19.31	18.79	18.32	17.85	17.26	16.80	16.33
270.0	21.65	21.07	20.48	19.90	19.25	18.73	18.20	17.79	17.26
315.0	21.30	20.60	20.07	19.49	19.02	18.38	17.91	17.50	17.09
360.0	21.89	21.19	20.66	20.07	19.61	18.90	18.38	17.91	17.38
C/γ(°)	72.0	73.0	74.0	75.0	76.0	77.0	78.0	79.0	80.0
0.0	16.91	16.44	16.09	15.68	15.39	15.04	14.63	14.28	13.75
45.0	17.79	17.32	16.80	16.44	16.27	16.85	17.79	16.68	16.09
90.0	17.15	16.62	16.50	16.91	17.32	16.74	16.09	15.33	14.28
135.0	16.97	16.56	16.21	15.86	15.57	15.27	14.92	14.51	14.22
180.0	16.09	15.68	15.39	15.10	14.75	14.46	14.16	13.69	13.34
225.0	15.92	15.57	15.27	14.98	14.75	14.28	13.99	13.58	13.23
270.0	16.85	16.39	16.04	15.86	15.86	15.22	14.63	14.16	13.75
315.0	16.50	16.09	15.74	15.33	15.04	14.69	14.22	13.81	13.34
360.0	16.91	16.44	16.09	15.68	15.39	15.04	14.63	14.28	13.75
C/γ(°)	81.0	82.0	83.0	84.0	85.0	86.0	87.0	88.0	89.0
0.0	13.34	12.99	12.52	11.82	11.24	10.53	10.18	9.95	9.77
45.0	15.04	13.81	12.93	12.52	11.70	11.06	10.36	10.07	9.89
90.0	13.58	13.05	12.41	11.53	10.89	10.30	10.07	9.89	9.71
135.0	13.81	13.28	12.64	11.82	10.94	10.36	10.18	9.89	9.77
180.0	12.99	12.47	11.88	11.00	10.36	10.12	9.95	9.83	9.66
225.0	12.70	12.11	11.35	10.71	10.18	10.01	9.83	9.66	9.66
270.0	13.40	12.87	12.35	11.65	10.83	10.30	10.01	9.83	9.66
315.0	12.99	12.64	12.17	11.29	10.65	10.18	9.95	9.77	9.66
360.0	13.34	12.99	12.52	11.82	11.24	10.53	10.18	9.95	9.77

Intensity data(cd)

C/γ(°)	90.0
0.0	9.71
45.0	9.71
90.0	9.66
135.0	9.66
180.0	9.66
225.0	9.66
270.0	9.66
315.0	9.66
360.0	9.71